

Hardware

BOLTS AND NUTS

Bolts 1/4"		
ITEM #	DESCRIPTION	
12775	1/4" X 3/4"	Carriage Bolt
1278	1/4" X 3/4"	Hex Head Bolt
1279	1/4" X 1"	Hex Head Bolt
1290	1/4" X 1-1/2"	Hex Head Bolt
1293	1/4" X 2"	Hex Head Bolt
1280	1/4" X 2-1/4"	Hex Head Bolt
1295	1/4" X 2-3/4"	Hex Head Bolt
12776	1/4" X 1/2"	Truss Head Bolt
1277	1/4" X 3/4"	Truss Head Bolt
1255	1/4" X 1-1/2"	Truss Head Bolt
12912	1/4" X 2"	Truss Head Bolt
1294	1/4" X 2-1/2"	Truss Head Bolt
ITEM #	Locknuts 1/4"	
1303	1/4"	Locknut
10692	1/4"	Locknut, Aluminum
1392	1/4"	Locknut, Nylon Insert
13920	1/4"	Locknut, Nylon Insert Stainless Steel



Carriage Bolt



Hex Head Bolt



Truss Head Bolt



Round Head Bolt



Locknut

Bolts 3/4"		
ITEM #	DESCRIPTION	
12762	3/8" X 3/4"	Carriage Bolt
12763	3/8" X 3/4"	Truss Head Bolt
12764	3/8" X 3/4"	Hex Head Bolt
1276	3/8" X 1"	Hex Head Bolt
12765	3/8" X 1-1/4"	Hex Head Bolt
12769	3/8" X 2-1/4"	Wedge Anchor
13469	3/8" X 2-1/4"	Hex Head Bolt
13470	3/8" X 2-1/2"	Hex Head Bolt
13468	3/8" X 2-3/4"	Hex Head Bolt
13471	3/8" X 3"	Hex Head Bolt
13472	3/8" X 3-1/4"	Hex Head Bolt
13473	3/8" X 3-1/2"	Hex Head Bolt
1348	3/8" X 4"	Hex Head Bolt
12761	3/8" X 5"	Hex Head Bolt
ITEM #	Locknuts 3/8"	
1347	3/8"	Locknut, Acorn Cap
1349	3/8"	Locknut, Hex Head

Bolts 5/16"		
ITEM #	DESCRIPTION	
1338	5/16" X 3/4"	Carriage Bolt
13411	5/16" X 1-1/4"	Carriage Bolt
13435	5/16" X 2-1/2"	Carriage Bolt
13436	5/16" X 3"	Carriage Bolt
1216	5/16" X 4-1/2"	Carriage Bolt
P005	5/16" X 5"	Carriage Bolt
13382	5/16" X 1/2"	Hex Head Bolt
1339	5/16" X 3/4"	Hex Head Bolt
1340	5/16" X 1"	Hex Head Bolt
1341	5/16" X 1-1/4"	Hex Head Bolt
1342	5/16" X 1-1/2"	Hex Head Bolt
13421	5/16" X 1-3/4"	Hex Head Bolt
13425	5/16" X 2"	Hex Head Bolt
13430	5/16" X 2-1/4"	Hex Head Bolt
1343	5/16" X 2-1/2"	Hex Head Bolt
13431	5/16" X 2-3/4"	Hex Head Bolt
1344	5/16" X 3"	Hex Head Bolt
1345	5/16" X 3-1/2"	Hex Head Bolt
13451	5/16" X 3-3/4"	Hex Head Bolt
13452	5/16" X 4-1/2"	Hex Head Bolt
13453	5/16" X 4-1/2"	Round Head Bolt
12771	5/16" X 1-3/4"	Truss Head Bolt
Z0004	5/16" X 4"	All Thread Bolt
ITEM #	Locknuts 5/16"	
1346	5/16"	Locknut, Hex Head
13921	5/16"	Locknut, Nylon Insert

ITEM #	DESCRIPTION	
13908	1/2" X 1-1/2"	Hex Head Bolt
13902	1/2 X 3"	Hex Head Bolt
13904	1/2" X 3-1/4"	Hex Head Bolt
1319	1/2"	Locknut, Hex Flanged
13811	1/2" X 6"	Wedge Bolt Drill Bit
12768	5/8" X 4-1/2"	Wedge Anchor w/nut
1272	8mm X 12mm	Hex Head Bolt

SCREWS AND FASTENERS

Screws 1/4"		
ITEM #	Description	
12770	1/4" X 1-1/4"	Tapcon
1238	1/4" X 3/4"	Tec
10691	1/4" X 3/4"	Hex Cap Screw
Screws, #6		
1266	3/8"	Tec, Phil Pan Head
Screws, #10		
1267	3/4"	Hex Head Screw
1236	3/4"	Tec, No washer
1228	1"	Woodtite, 1/2" washer
1220	1-1/2"	Woodtite, 1-1/8" washer
1222	2"	Woodtite, No washer
1221	2"	Woodtite, 1-1/8" washer
Screws, #12		
10342	1"	Tec, No washer
1231	1"	Tec, 9/16" washer
1233	1"	Tec, 1" washer
10346	1-1/2"	Tec, 1" washer
103471	2"	Tec, 9/16" washer
1250	2-1/4"	Tec, Header
1251	3"	Tec with wings

Washers		
Item #	Description	
1304	3/16" X 1"	Flat Washer
65421	5/16"	Washer
1305	5/16" X 1-1/4"	Washer
1306	3/8" X 13/16"	Washer
13053	3/8" X 1-1/4"	Washer
13912	5/8" X 1-5/16"	Washer
12751	5/8" X 1-3/4"	Washer
1331	23/32" X 11/32"	Neoprene Washer
2112	7/8" X 1/2"	Neoprene Washer
10343	1"	Neo-Bonded Washer
10341	1-1/4"	Neoprene Washer

Eye Bolts		
Item #	Description	
13234	5/16" X 1"	Eye Bolt
13438	5/16" X 3"	Eye Bolt
13235	5/16" X 6"	Eye Bolt
P2925	3/8" X 6"	Eye Bolt
13152	3/8" X 10"	Eye Bolt
12755	5/8" X 12"	Anchor Bolt



Woodtite #1228



Tec, No Washer



Tec, 1" Washer



Washer



Eye Bolt



U-Bolt

U-Bolts (All U-bolts sold without plates or nuts)		
Item #	Description	
Z1321	1/4" 1.5" X 2.75"	U-Bolt
Z1318	5/16"	U-Bolt
13202	5/16" 2X4L (Square)	U-Bolt
13216	5/16" 2.5 X 3-3/16"	U-Bolt
Z1319	3/8" 2" X 3"	U-Bolt
Z1323	3/8" 3" X 3"	U-Bolt
1328	3/8" 3" X 3-3/4" (Square)	U-Bolt

Threaded Rods		
Item #	Description	
13151	3/8" X 36"	Threaded Rod
127771	3/4" X 18"	Threaded Rod

Gaskets		
Item #	Description	
10344	1/16" X 1"	PCSS Support Bracket Gasket

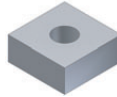
FASTENERS, ADHESIVES, & MISCELLANEOUS

Rivets		
Item #	Description	
1357	3/16"	Bulb-tite Rivet with washer
1373	3/16"	Blind Rivet
P1178	1/8"	Cherry Rivet



Tape		
Item #	Description	
23316	2"x108'	PCSS Vent Tape, #394
P3690	2"x50'	Aluminum Butyl Tape
1040	1.5"x150'	PCSS Tape, Aluminum

PCSS Seal		
Item #	Description	
1140	5/8"	Black, Round Neoprene Seal
1142	3/4"	Black, Round Neoprene Seal
1138	1"x1"x40"	Corrugated Closure Strip



Sealant		
<i>Seals PCSS panels, gutters & building joints. 1/8"x1/4" bead will yield about 50 linear feet.</i>		
Item #	Cartridge	Butyl, #757
2314	Cartridge	Clear Silicone #1199

Neoprene Shim		
Item #	Description	
10345	1"	Square Neoprene Shim (PCSS)



Cording, Polypropylene		
Item #	600' Roll	Black Cording
2380	600' Roll	Black Cording

Brace Band		
Item #	Description	
Z7753	1.315"	Bev 1-3/8" Brace Band
15263	1.66"	Bev 1-5/8" Brace Band
15262	1.90"	Bev 1-7/8" Brace Band
15261	2.40"	Bev 2-3/8" Brace Band
15252	2.875"	2-7/8" Brace Band



Rope Thimble		
Item #	3/16"	Rope Thimble, Galvanized
1522	3/16"	Rope Thimble, Galvanized
15225	1/4"	Rope Thimble, Galvanized

Pipe Strap		
Item #	Description	
1528	1.315"	Bench Cross Connection
15281	1.315"	1" Pipe Strap
1530	1.66"	1" Pipe Strap
15312	1.90"	1" Pipe Strap
1532	2.197"	2" EMT, Pipe Strap
1533	2.40"	1" Pipe Strap
15342	2.875"	2-1/2" Pipe Strap

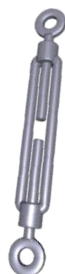


Steel Cable, Galvanized		
<i>Use 1/8" cable for lengths up to 150'; 3/16" cable for lengths over 150'</i>		
Item #	Description	
13842	1/8"	7x7 Main
1386	1/8"	7x19 Drop
1385	3/16"	7x7 Main
13866	1/4"	7x19 Cable



Turnbuckle		
Item #	3/8"x4"	Turnbuckle (8" extended)
15212	3/8"x4"	Turnbuckle (8" extended)

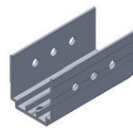
Tube Strap		
Item #	Description	
992067	2x2	Tube Strap, Fit
P2391	3x3	Tube Strap
P2990	3x2	Tube Strap, Aluminum
P9415	4x2	Tube Strap-Attach to Endwall
993640	4x2	Tube Strap, Aluminum



CONNECTORS & TOOLS

Purlin Securing Bracket

Secures purlin to bow and/or sidewall girt. Requires two 5/16"x3/4" hex head bolts (#1339) with nuts (#1346) and one 1-1/2" pipe strap (#15312)



Item #	Description
10351	1" Square, 4-1/2" long
0667	2" Square, 4-1/2" long
P2390	3x2, 4-1/2" long
P2389	3x2 Girt Bracket, 6" long
0671	2-1/4" Purlin/Girt End, 2" Square

Rivet Gun

Item #	Description
1365	Pop Rivet Gun

Tec Screw Chucks

Item #	Description	
1230	1/4"	Magnetic Rapid Glaze Chuck
1232	5/16"	Magnetic Rapid Glaze Chuck
1229	3/8"	Rapid Glaze Chuck



3x2 90° Aluminum Connector

Item #	Description
06853	3x2, 3" long



Vertical Pipe Connection

Item #	Description
1019	1.90" Vertical Pipe Connection



Aluminum Purlin Block

Item #	Description
10235	Aluminum Purlin Block, 2"



Top Cord Endwall Connector

Item #	Description
15260	2.40" Top Cord Endwall Connector
P2316	1.90" Top Cord Endwall Connector



3x2 Adjustable Angle Connector

Item #	Description
P2315	Adjustable Angle Connector 3x2



2" Split Tee

Item #	Description
Z7761	Split T-2" (set of 2)

Crimp Tool/Cable Cutter Combination

Item #	Description
1387	Crimp Tool/Cable Cutter